



Faucets and Fittings
FD15

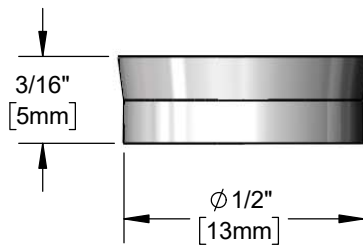
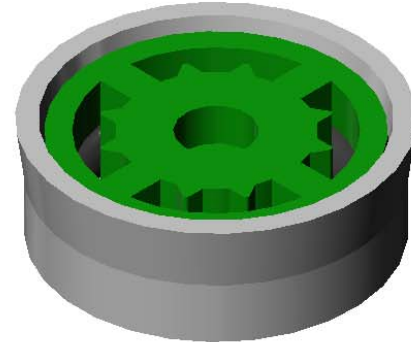
TAG:

Flow Regulator

Architect/Engineering Specifications:

1.5 GPM flow regulator. Certified to ANSI/NSF 61

Job Name _____
 Model Specified _____ Quantity _____
 Variations Specified _____
 Date _____



Features & Benefits:

- 1.5 GPM pressure compensating flow regulator
- Operates as a flexible orifice to provide reliable flow regulation from 20 - 125 psi
- Noiseless and trouble free operation over many years
- Press-fit design
- Material: Plastic body, core and rubber o-ring

Product Compliance:

- NSF 61 - Section 9



Warranty: One Year (Limited)

Performance Data:

- Pressure: 20 - 125 psi
- Temperature: 40 °F - 140 °F
- Flow Rate: 1.5 GPM @ 60 psi



T&S BRASS AND BRONZE WORKS, INC.



• 2 Saddleback Cove • Travelers Rest, SC 29690
 Ph 800-476-4103 • Fax 864-834-3518
 • Simi Valley, CA • Ph 800-423-0150 • www.tsbrass.com

Date: 07/10/18