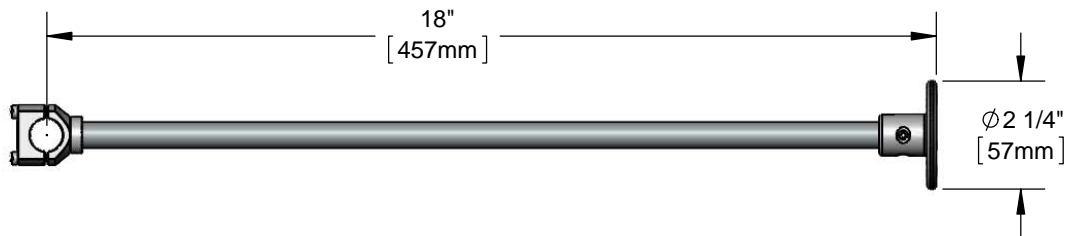
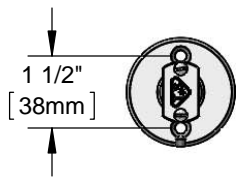
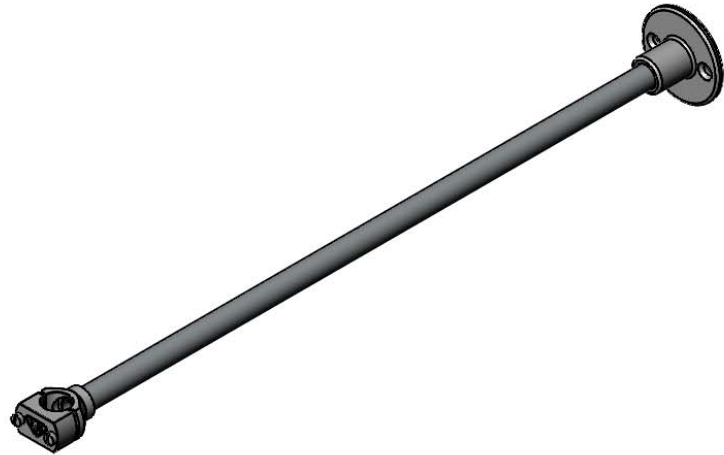




Architect/Engineering Specifications:

Polished chrome plated brass 18" wall bracket with chrome plated mounting screws.

Job Name _____
 Model Specified _____ Quantity _____
 Variations Specified _____
 Date _____



Features & Benefits:

- Polished chrome plated brass 18" wall bracket
- Ø2 1/4" wall flange
- Fits 3/8" pipe
- Mounting screws (included)
- Material: Polished chrome plated brass body and chrome plated brass screws

Product Compliance:

- N/A

Warranty: One Year (Limited)

Performance Data:

- N/A

