

# T&S BRASS — MAKING IT EASY TO CONVERT TO TOUCH FREE

*Protect the health of your customers and employees.*



Retrofit with:

**EC-3105**

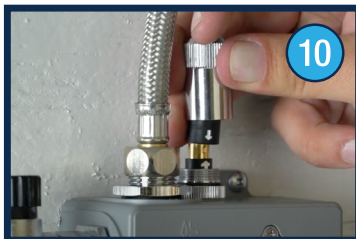
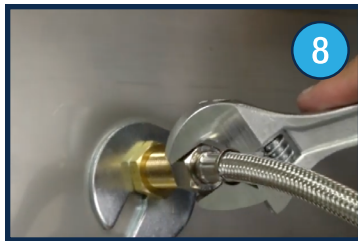
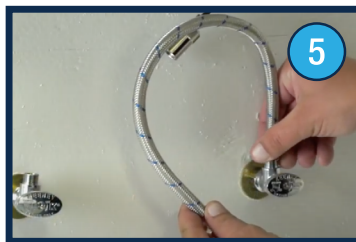
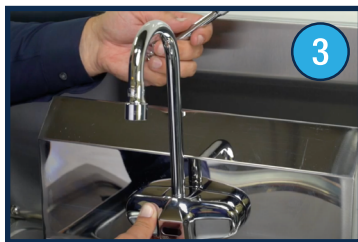


**EC-3105-HG**



Easy to Retrofit Using the Existing Sink • No Electricity Required  
All Units Come Standard with A Battery Power Option

## INSTALLATION STEPS



- 1 Make sure the water is turned off.
- 2 Remove the existing Manual Faucet.
- 3 Place the new Sensor Faucet on the backsplash.
- 4 Tighten hardware.
- 5 Attach flex water lines to shut-off valves.
- 6 Fasten control module to the wall.
- 7 Secure flex water lines to the mixing valve.
- 8 Attach flex line to the faucet inlet and the control module outlet.
- 9 Remove the protective rubber cap.
- 10 Attach the sensor cable.
- 11 Attach the cable connector cover.
- 12 Turn the water on.

Visit [tsbrass.com/c/sensor-faucets](https://tsbrass.com/c/sensor-faucets) today!

