

TOTAL COST OF OWNERSHIP

ARE YOU FACTORING IN ALL YOUR COSTS?

When purchasing new equipment, the initial investment is just one of the many factors to consider. By choosing high-quality products from a trusted brand, you can save more over the long term with fewer leaks and costly replacements.

INSTALLATION COST



FREQUENT REPLACEMENTS CAN ADD UP QUICKLY

Choose high-quality equipment that lasts for years to come, eliminating costly repeated installations.

50% SAVINGS

on installation time and labor costs with EasyInstall faucets and pre-rinse units.

UTILITIES



9x

Did you know that the cost of energy needed to heat water is typically 9 times the cost of water?



EVERY DROP COUNTS

Installing high-quality, long-lasting equipment helps save water, time and money in the long run — an important part of meeting sustainability goals.

\$3,500

SAVED PER YEAR*

Low-flow products can save facilities thousands in water costs per year (and tens of thousands of liters of water used) and perform equally as well as higher-flow alternatives.

*Data based on US findings.

1.5x

The more water you use with high-flow fixtures, the more sewage costs you should expect, which are approximately 1.5x higher than the cost of the water.

MAINTENANCE & REPAIR COST



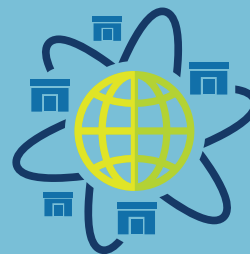
INTERCHANGEABLE PARTS

make maintenance more cost efficient and easier to address.



DOWNTIME AND REPAIR

costs add up with frequent parts replacements every year or two — compared with a slightly higher initial investment for longer-lasting parts.



GLOBAL SALES AND PARTS AVAILABILITY

Enjoy the convenience of T&S' worldwide distribution from five different warehouses.



RELIABILITY BUILT IN™

13,262 LITERS* SAVED ANNUALLY

by replacing a standard-flow aerator with a T&S low-flow alternative. In fact, all that water could fill a small above-ground pool.

*Assuming 3 employees/day, 8 handwashes/employee/day, 365 operating days/year, 20 seconds per handwash.

11,356

LITERS PER YEAR



That's how much water is wasted annually from a faucet that leaks one drop per second — enough to fill three fire trucks.