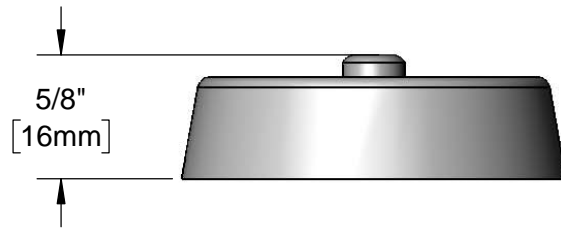
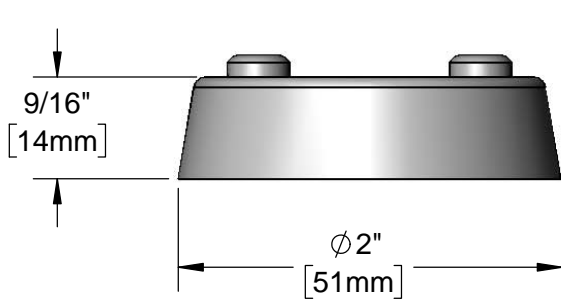
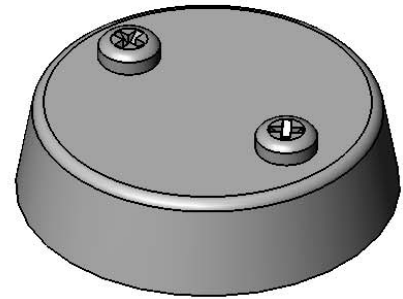




Architect/Engineering Specifications:

Chrome plated brass vacuum breaker cover plate with mounting screws.

Job Name _____
 Model Specified _____ Quantity _____
 Variations Specified _____
 Date _____



Features & Benefits:

- Chrome plated vacuum breaker cover plate
- Mounting screws
- Material: Polished chrome plated brass body

Product Compliance:

- N/A

Warranty: One Year (Limited)

Performance Data:

- N/A

