



# Gas Hoses

## HG-4D-48SEL-PS

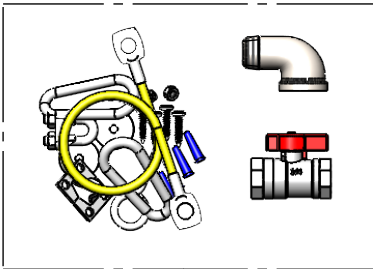
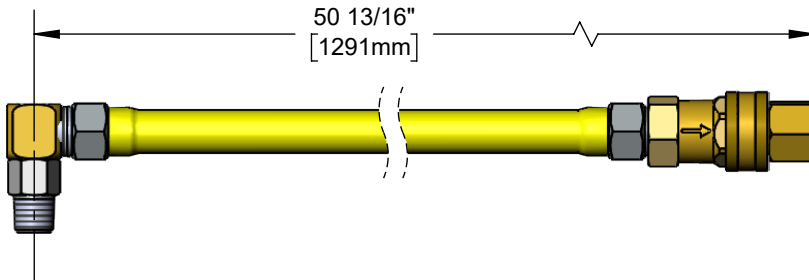
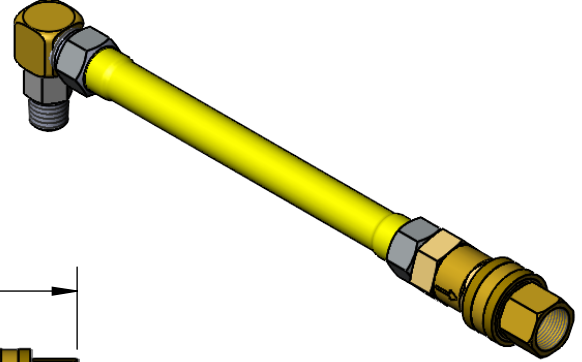
TAG:

SAFETY-LINK Gas Hose

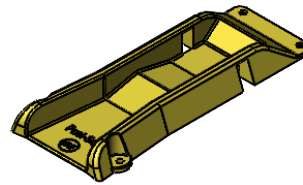
### Architect/Engineering Specifications:

48" coated gas appliance connector hose with 3/4" NPT male connections, 2-piece quick disconnect, (1) swivel-link fitting, (1) street elbow, restraining cable kit and (2) Posi-Set appliance locating device with hardware. Certified to ANSI Z21.69/CSA 6.16 and NSF 2.

Job Name \_\_\_\_\_  
 Model Specified \_\_\_\_\_ Quantity \_\_\_\_\_  
 Variations Specified \_\_\_\_\_  
 Date \_\_\_\_\_



Installation Kit



(2) Posi-Set Appliance Locating Devices  
(Mounting Hardware Included)



### Features & Benefits:

- 48" coated gas appliance connector
- 3/4" NPT male freespin inlet
- 3/4" NPT male freespin outlet
- 3/4" NPT female quick-disconnect
- Quick-disconnect socket acts as a shut-off valve when the plug and socket are disconnected
- (1) 3/4" NPT swivel-links fittings
- (1) 3/4" NPT 90° street elbow
- 5' restraining cable kit
- (2) Posi-Set appliance locating device with hardware
- 360° rotatable hex nut rotates completely and freely
- Optimum torsional relief improves safety, increases connector life
- Provides efficient, full gas flow
- Material: Extruded coated stainless steel braids

### Product Compliance:

- ANSI Z21.69 / CSA 6.16
- NSF 2
- NFPA 54

**Warranty:** Five Year (Limited)

### Performance Data:

- Gas Pressure: 1/2 psi max
- Temperature: 350°F max w/ fuseable link thermal shut-off
- Capacity: 180,000 BTU/ hr min



T&S BRASS AND BRONZE WORKS, INC.



• 2 Saddleback Cove • Travelers Rest, SC 29690  
 Ph 800-476-4103 • Fax 864-834-3518  
 • Simi Valley, CA • Ph 800-423-0150 • www.tsbrass.com

Date: 09/25/24