



**Gas Hoses**  
**HG-4D-72G-SEL**

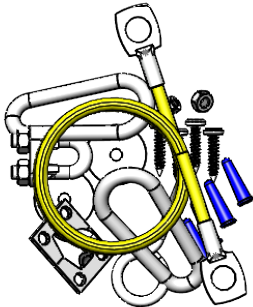
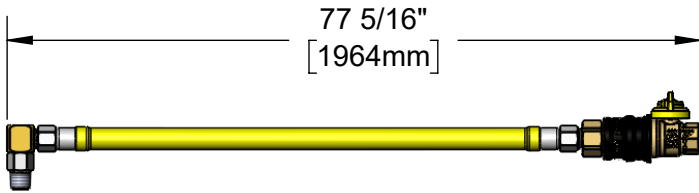
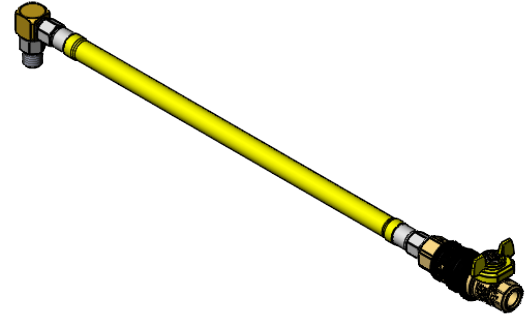
TAG:

**SAFE-T-GUARD** Gas Hoses

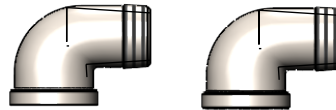
**Architect/Engineering Specifications:**

72" coated gas appliance connector hose with 3/4" NPT male connection, quick disconnect valve, (1) swivel fitting, (2) street elbows and restraining cable kit. Certified to ANSI Z21.69/CSA 6.16 and NSF 2.

Job Name \_\_\_\_\_  
 Model Specified \_\_\_\_\_ Quantity \_\_\_\_\_  
 Variations Specified \_\_\_\_\_  
 Date \_\_\_\_\_



**AG-RC**  
**5' Restraining Cable Kit**  
(Included)



**(2) 3/4" NPT Street Els**  
(Included)



**Features & Benefits:**

- 72" coated gas appliance connector
- 3/4" NPT male freespin inlet
- 3/4" NPT male freespin outlet
- 3/4" NPT female quick-disconnect valve
- Quick-disconnect valve acts as a shut-off valve when the plug and socket are disconnected
- (1) 3/4" NPT SwiveLink fitting w/ male outlet
- 5' restraining cable kit
- (2) 3/4" NPT 90° street elbow
- 360° rotatable hex nut rotates completely and freely
- Optimum torsional relief improves safety, increases connector life
- Provides efficient, full gas flow
- Material: Extruded coated stainless steel braids

**Product Compliance:**

- ANSI Z21.69 / CSA 6.16
- NSF 2
- NFPA 54

**Warranty:** Five Year (Limited)

**Performance Data:**

- Gas Pressure: 1/2 psi max
- Temperature: 350°F max w/ fuseable link thermal shut-off
- Capacity: 140,000 BTU/hr min



**T&S BRASS AND BRONZE WORKS, INC.**



• 2 Saddleback Cove • Travelers Rest, SC 29690  
 Ph 800-476-4103 • Fax 864-834-3518  
 • Simi Valley, CA • Ph 800-423-0150 • www.tsbrass.com

Date: 04/30/24