



Gas Hoses
HG-4E-36G-SEL

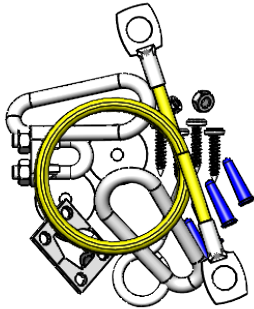
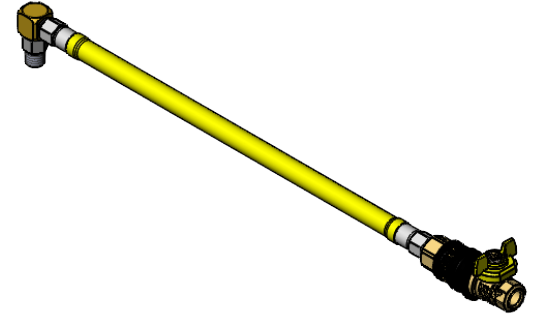
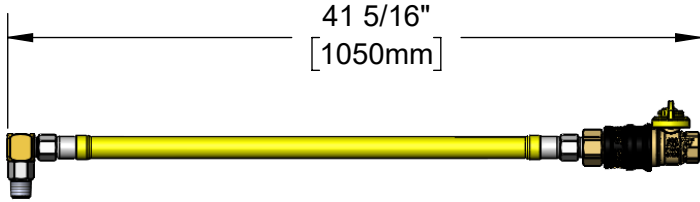
TAG:

SAFET-GUARD Gas Hoses

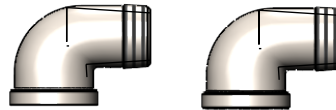
Architect/Engineering Specifications:

36" coated gas appliance connector hose with 1" NPT male connection, quick disconnect valve, (1) swivel fitting, (2) street elbows and restraining cable kit. Certified to ANSI Z21.69/CSA 6.16 and NSF 2.

Job Name _____
 Model Specified _____ Quantity _____
 Variations Specified _____
 Date _____



AG-RC
5' Restraining Cable Kit
(Included)



(2) 1" NPT Street Els
(Included)



Features & Benefits:

- 36" coated gas appliance connector
- 1" NPT male freespin inlet
- 1" NPT male freespin outlet
- 1" NPT female quick-disconnect valve
- Quick-disconnect valve acts as a shut-off valve when the plug and socket are disconnected
- (1) 1" NPT SwiveLink fitting w/ male outlet
- 5' restraining cable kit
- (2) 1" NPT 90° street elbow
- 360° rotatable hex nut rotates completely and freely
- Optimum torsional relief improves safety, increases connector life
- Provides efficient, full gas flow
- Material: Extruded coated stainless steel braids

Product Compliance:

- ANSI Z21.69 / CSA 6.16
- NSF 2
- NFPA 54

Warranty: Five Year (Limited)

Performance Data:

- Gas Pressure: 1/2 psi max
- Temperature: 350°F max w/ fuseable link thermal shut-off
- Capacity: 380,000 BTU/hr min



T&S BRASS AND BRONZE WORKS, INC.



• 2 Saddleback Cove • Travelers Rest, SC 29690
 Ph 800-476-4103 • Fax 864-834-3518
 • Simi Valley, CA • Ph 800-423-0150 • www.tsbrass.com

Date: 04/30/24