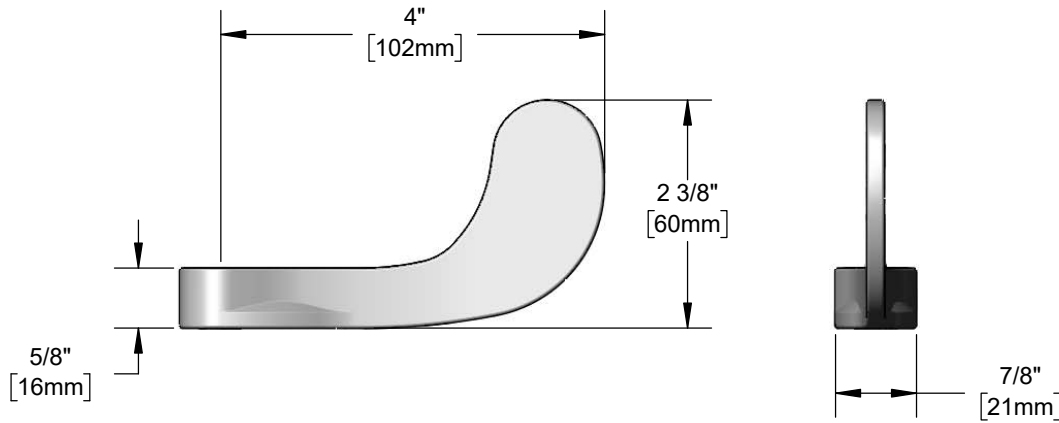
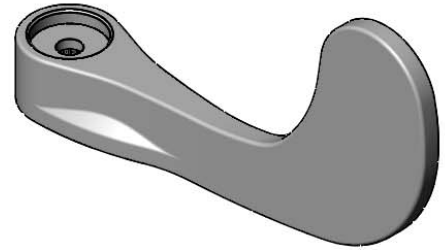




Architect/Engineering Specifications:

Anti-microbial coated 4" wrist action handle. Fits all standard T&S Eterna compression and Cerama cartridges.

Job Name _____
 Model Specified _____ Quantity _____
 Variations Specified _____
 Date _____



Features & Benefits:

- Anti-microbial coated 4" wrist action handle
- Fits all T&S Eterna compression and Cerama cartridges
- Material: Anti-microbial coated chrome plated metal handle

Product Compliance:

- N/A

Warranty: One Year (Limited)

Performance Data:

- N/A

