



T&S BRASS AND BRONZE WORKS, INC.
 2 Saddleback Cove / P.O. Box 1088
 Travelers Rest, SC 29690

Model No.
S016783-30

Item No.

Travelers Rest, SC: 800-476-4103 • Simi Valley, CA: 800-423-0150 • Fax: 864-834-3518 • www.tsbrass.com

EVERSTEEL

This Space for Architect/Engineer Approval

Job Name _____ Date _____

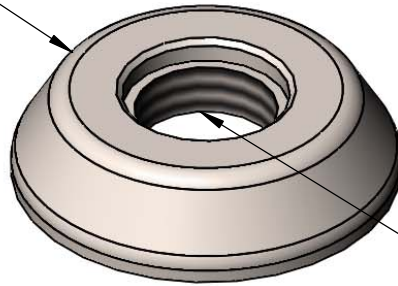
Model Specified _____ Quantity _____

Customer/Wholesaler _____

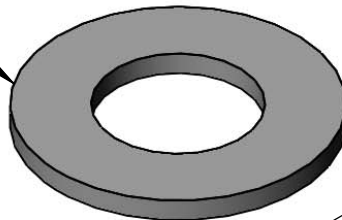
Contractor _____

Architect/Engineer _____

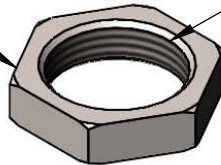
2" Adjustable
 Stainless Steel
 Slip Deck Flange



Delrin Washer



Stainless Steel
 Hex Nut



1/2-14 NPSL
 Threads

Product Specifications:

Adjustable Stainless Steel Slip Deck Flange with Delrin Washer and
 Stainless Steel Hex Nut

Product Compliance: