



T&S BRASS AND BRONZE WORKS, INC.

2 Saddleback Cove / P.O. Box 1088
Travelers Rest, SC 29690



REG. #A2601
ISO #9001

Model No.
G016629-45

Item No.

Travelers Rest, SC: 800-476-4103 Simi Valley, CA: 800-423-0150 Fax: 864-834-3518 www.tsbrass.com

This Space for Architect/Engineer Approval

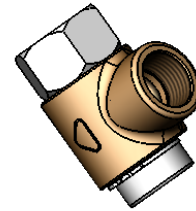
Job Name _____ Date _____

Model Specified _____ Quantity _____

Customer/Wholesaler _____

Contractor _____

Architect/Engineer _____



1/2" NPT
S/S INLET

NITRILE O-RINGS
(2) PLACES

BACK-UP
RINGS
(2) PLACES

1/2" NPT OUTLET
BRASS SWIVEL

S/S CLIP RING

Product Specifications:

**1/2" NPT MED PRESSURE
SWIVEL ASSEMBLY**

Drawn
JRM

Checked
ARH

Approved
JHB

Scale:

1:2

Date:

7/11/07