



**T&S BRASS AND BRONZE WORKS, INC.**  
 2 Saddleback Cove / P.O. Box 1088  
 Travelers Rest, SC 29690

Model No.  
**B-1460-SMB-CR**

Item No.

Travelers Rest, SC: 800-476-4103 • Simi Valley, CA: 800-423-0150 • Fax: 864-834-3518 • www.tsbrass.com

This Space for Architect/Engineer Approval

Job Name \_\_\_\_\_ Date \_\_\_\_\_

Model Specified \_\_\_\_\_ Quantity \_\_\_\_\_

Customer/Wholesaler \_\_\_\_\_

Contractor \_\_\_\_\_

Architect/Engineer \_\_\_\_\_

B-0963  
 Continuous Pressure  
 Vacuum Breaker w/  
 Integral Check Valve

EasyInstall  
 3/8" NPT x 18"  
 Riser

3/8" NPT x 36"  
 Flexible Water  
 Connector

Stainless Steel  
 Quick Disconnect  
 w/ 3/8" NPT Male Outlet

B-0109-01  
 Wall Bracket

25"  
 [635mm]

Swivel Elbow w/  
 Ø 2" [51mm] Flange,  
 1/2" NPT Female Inlet

Control Valve  
 Body Behind Panel  
 Operable From Outside  
 of Closed Cabinet

Mixing Faucet w/ Quarter-  
 Turn Cerama Cartridges  
 w/ Check valves

2"  
 [51mm]

2"  
 [51mm]

Supply Stop

1/2" Check  
 Valve

1/2" NPT  
 Female  
 Union Inlets

32"  
 [813mm]

6"  
 [152mm]

2 7/8"  
 [73mm]

1"  
 [25mm]

4"  
 [102mm]  
 Punchouts

3 1/8"  
 [79mm]

4"  
 [102mm]

**Product Specifications:**

EasyInstall Hose Reel Surface Mount Cabinet, Concealed Bypass Mixing Valve, Cerama Cartridges w/ Check Valves, Loose-Key Supply Stops, 1/2" NPT Female Union Inlets for Bottom Supplies, Control Valve w/ Cerama Cartridge, 1/2" NPT Riser, Check Valves, Swivel Elbows w/ 1/2" NPT Female Inlet, EasyInstall 3/8" NPT x 18" Riser, 6" Wall Bracket, Continuous Pressure Vacuum Breaker w/ Integral Check Valve, 36" Flexible Water Hose w/ Stainless Steel Quick Disconnect & 3/8" NPT Male Outlet

**Product Compliance:**

NSF 61 Exempt (Non-Portable)  
 ASSE 1056 (VB)



# T&S BRASS AND BRONZE WORKS, INC.

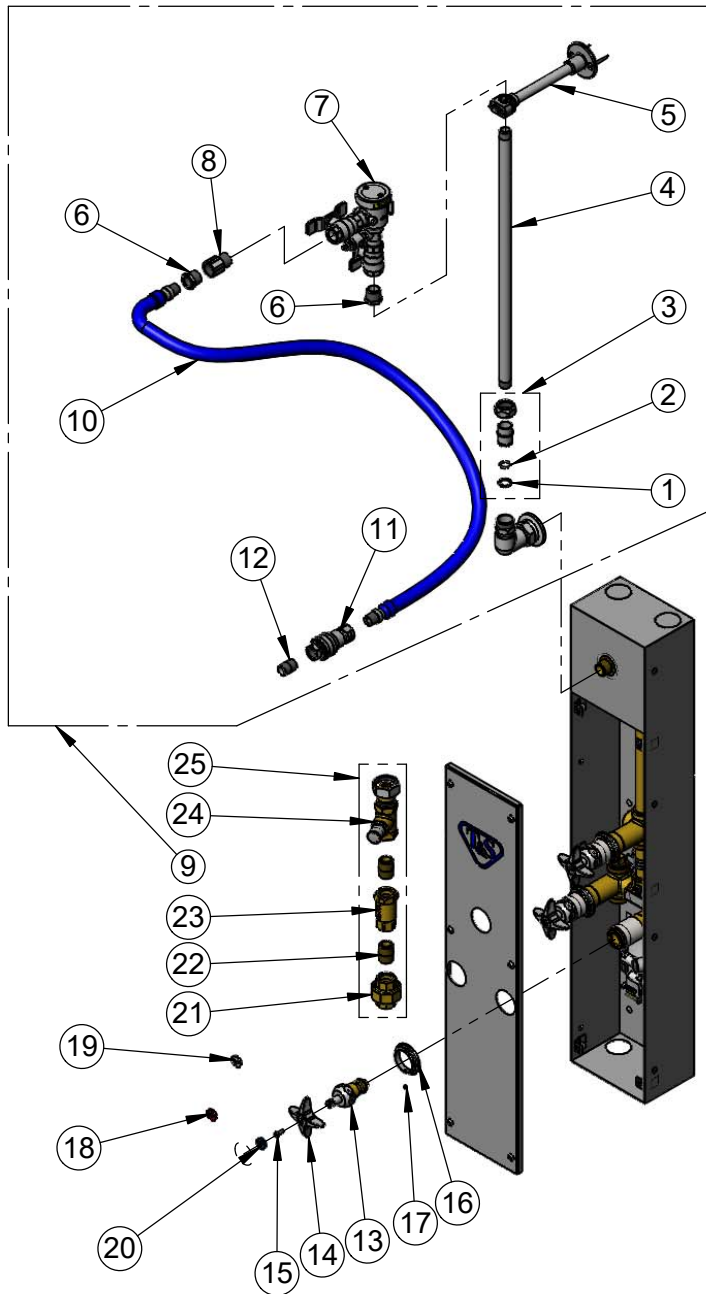
2 Saddleback Cove / P.O. Box 1088  
Travelers Rest, SC 29690

Model No.

**B-1460-SMB-CR**

Item No.

Travelers Rest, SC: 800-476-4103 • Simi Valley, CA: 800-423-0150 • Fax: 864-834-3518 • www.tsbrass.com



ITEM NO.	SALES NO.	DESCRIPTION
1	014200-45	Star Washer, Anti-Rotation
2	001065-45	O-Ring
3	EZ-K	EasyInstall Kit: Nut, Bushing, O-Ring & Lock Washer
4	000369-40	3/8" NPT x 18" Riser
5	B-0109-01	6" Wall Bracket
6	001359-40	Hex Bushing, 1/2" NPT Male x 3/8" NPT Female
7	B-0963	Vacuum Breaker 1/2" NPT Female
8	015073-40	Check Valve w/ 1/2" NPT Adapter
9	0RK-SK	Hose Reel Connector Kit
10	HW-2B-36	3/8" NPT x 36" Flexible Connector Hose
11	AW-5B	3/8" NPT Quick Disconnect
12	002535-25	3/8" NPT Close Nipple
13	012394-25NS	Quarter-Turn Cerama w/ Check Valve, RTC
14	002521-45NS	4-Arm Handle (New Style)
15	000925-45	Lab Handle Screw
16	020839-40	Escutcheon
17	000939-45	Escutcheon, Set Screw
18	001193-19NS	Red Button Index, Press In
19	001205-19NS	White Blank Button Index
20	018506-19NS	Blue Button Index, Press In
21	006649-20	1/2" Union, Unplated
22	002534-20	1/2" Male Close Nipple, Unplated
23	B-CVH1-2	1/2" NPT Check Valve
24	020848-20	Straight Loose Key Stop, Unplated
25	020974-40	Inlet Assembly

**Product Specifications:**

EasyInstall Hose Reel Surface Mount Cabinet, Concealed Bypass Mixing Valve, Cerama Cartridges w/ Check Valves, Loose-Key Supply Stops, 1/2" NPT Female Union Inlets for Bottom Supplies, Control Valve w/ Cerama Cartridge, 1/2" NPT Riser, Check Valves, Swivel Elbows w/ 1/2" NPT Female Inlet, EasyInstall 3/8" NPT x 18" Riser, 6" Wall Bracket, Continuous Pressure Vacuum Breaker w/ Integral Check Valve, 36" Flexible Water Hose w/ Stainless Steel Quick Disconnect & 3/8" NPT Male Outlet

**Product Compliance:**

NSF 61 Exempt (Non-Portable)  
ASSE 1056 (VB)