



T&S BRASS AND BRONZE WORKS, INC.
 2 Saddleback Cove / P.O. Box 1088
 Travelers Rest, SC 29690

Model No.
PG-1WESV-FS

Item No.

Travelers Rest, SC: 800-476-4103 • Simi Valley, CA: 800-423-0150 • Fax: 864-834-3518 • www.tsbrass.com

This Space for Architect/Engineer Approval

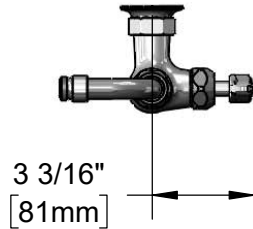
Job Name _____ Date _____

Model Specified _____ Quantity _____

Customer/Wholesaler _____

Contractor _____

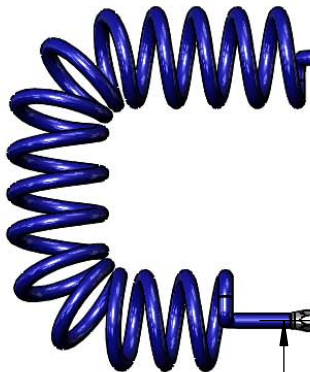
Architect/Engineer _____



Coiled Polyurethane
 Hose. Maximum
 Stretch Length of 9 Ft

35° High Flow
 Spray Head

Mount
 Surface



Swivel Arm

Swivel Adapter

Items Not Shown
 for Clarity

3/8" NPT x 4"
 Riser

B-0970-FE
 Continuous Pressure
 Vacuum Breaker

Quarter-Turn Cerama Cartridge
 w/ Check Valve &
 Lever Handle w/ Blue Index

Ø2" [51mm]
 Flange w/
 1/2" NPT
 Female Inlet

11 3/4"
 [299mm]

2 9/16"
 [66mm]

Product Specifications:

Pet Grooming Unit:

Single Hole Single Temperature Wall Mount Faucet, Quarter-Turn Cerama Cartridge w/ Check Valve, Lever Handle, Blue Index, Vacuum Breaker, 9 Ft Coiled Hose, Angled High Flow Spray Head & 1/2" NPT Female Inlet

Product Compliance:

ASME A112.18.1 / CSA B125.1
 NSF 61 Exempt (Non-Potable)
 CSA B64.8 (VB)

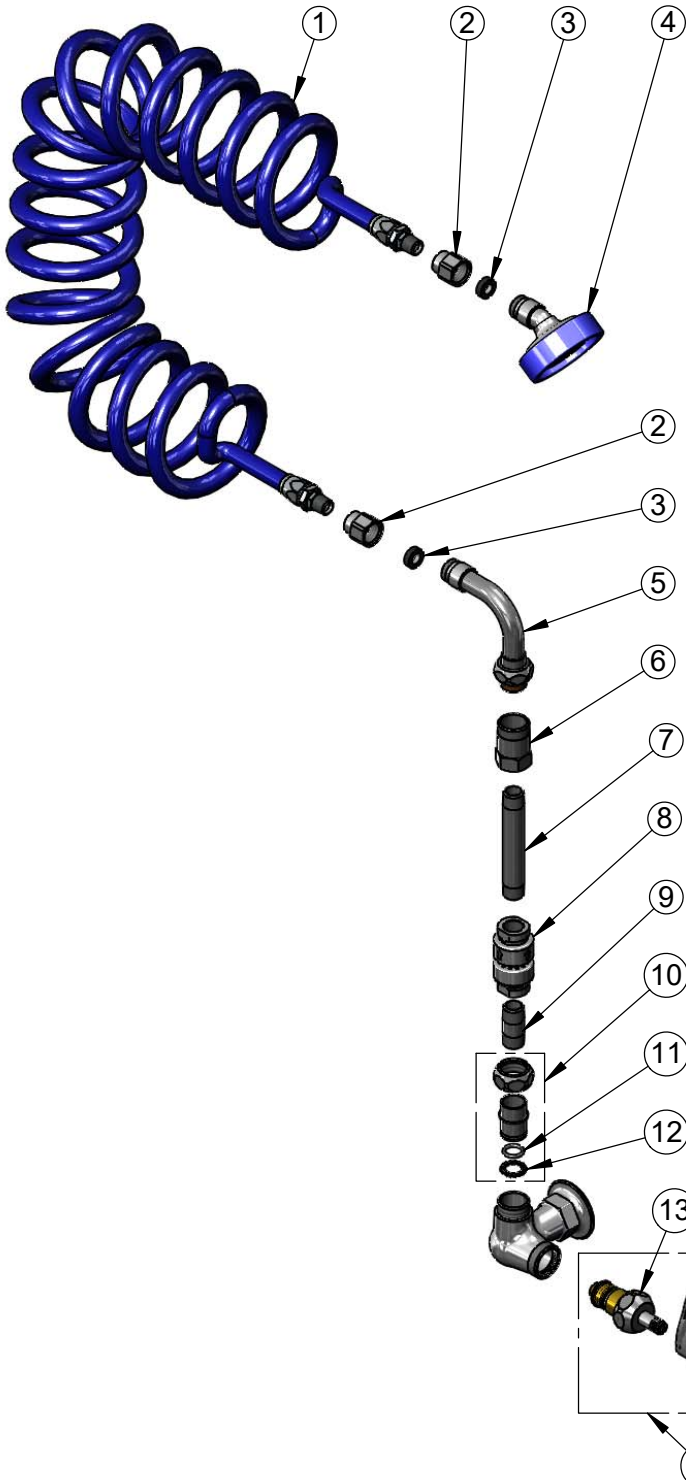


T&S BRASS AND BRONZE WORKS, INC.
 2 Saddleback Cove / P.O. Box 1088
 Travelers Rest, SC 29690

Model No.
PG-1WESV-FS

Item No.

Travelers Rest, SC: 800-476-4103 • Simi Valley, CA: 800-423-0150 • Fax: 864-834-3518 • www.tsbrass.com



ITEM NO.	SALES NO.	DESCRIPTION
1	013539-45	9 ft of Coiled Hose (Blue)
2	000732-25	Hose Outlet Nut
3	010476-45	#27 Washer
4	019953-40	Angle Spray Head (Blue)
5	034A	Swivel Adapter, 90°
6	054X	Swivel Body
7	000360-40	Nipple, 3/8" NPT x 4"
8	B-0970-FE	3/8" NPT Vacuum Breaker
9	002341-40	Nipple, 3/8" NPT x 1-1/2"
10	EZ-K	EasyInstall Kit
11	001065-45	O-Ring
12	014200-45	Star Washer, Anti-Rotation
13	012394-25NS	Quarter-Turn Cerama Cartridge w/ Check Valve, RTC
14	001638-45NS	Lever Handle (New Style)
15	000925-45	Lab Handle Screw
16	018506-19NS	Blue Button Index, Press-in
17	019641-25	Quarter-Turn Cerama Cartridge RTC w/ Check Valve, Handle, Blue Index & Screw

Product Specifications:
 Pet Grooming Unit:
 Single Hole Single Temperature Wall Mount Faucet, Quarter-Turn Cerama Cartridge w/ Check Valve, Lever Handle, Blue Index, Vacuum Breaker, 9 Ft Coiled Hose, Angled High Flow Spray Head & 1/2" NPT Female Inlet

Product Compliance:
 ASME A112.18.1 / CSA B125.1
 NSF 61 Exempt (Non-Potable)
 CSA B64.8 (VB)